

Sandringham Maths' Trail

21 Questions

NAME : _____

CLASS : _____

DATE : _____

1. Write your full name - first name AND surname



2. Many students cycle to school and lock their bikes in the bike racks. These racks are out of bounds during the school day. How many yellow wheel holders can you see?



a) 3

b) 7

c) 10

d) 13

3. This is by the entrance to D block where you find student services. The people at student services will help look after Year 7s when they arrive. If the window is a square with each edge being 1m long, what is the perimeter of the window?



a) 1 m

b) 2 m

c) 8 m

d) 4 m

4. Here is where Sandringham students line up for lunch. The numbers painted on the ground show where each different year group lines up. The numbers you can see in the picture are 7, 8, 8, 9, 10

What is the median (middle value) of these number?



a) 9

b) 8

c) 10

d) 4

5. When the weather is good you can eat your lunch outside the entrance to B block - where you can find DT. There are 9 benches in the picture. If each table seats 6, how many students can eat here at the same time?



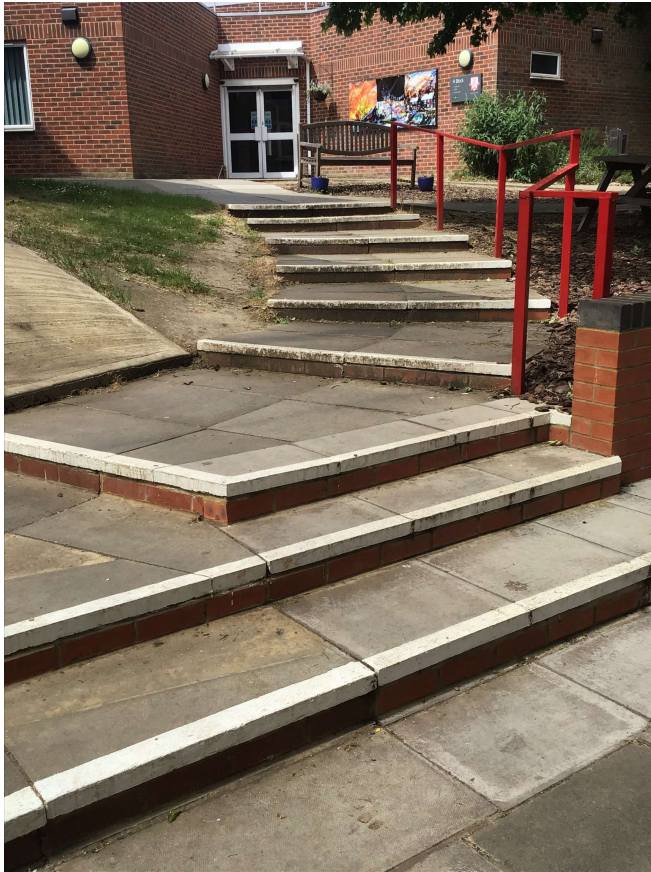
a) 54

b) 60

c) 48

d) 96

6. This is the entrance to H block where the staff room is located.
Count the steps in the picture leading up.



a) 7

b) 8

c) 9

d) 10

7. In C block students learn Languages, History, Geography and RS.

There is a one way system inside and this is a picture of the down stairs and exit. If there are 3 floors and 2 flights of stairs between each floor, how many flights of stairs will there be?



a) 6

b) 2

c) 3

d) 4

8. This is the entrance to A block and the covered area is useful when it is raining. How many curved beams that form part of the roof can you see?



a) 4

b) 5

c) 6

d) 38

9. The paved rectangular section where the benches sit is 20 paving stones long by 14 paving stones wide. How many paving stones are there in total?



a) 200

b) 240

c) 280

d) 320

10. This is the entrance to the Gym, Dance Studio 1 and the Swimming Pool.

If there was one bicycle attached to each one of the bicycle racks, how many wheels would you be able to see?



a) 3

b) 5

c) 8

d) 10

11. This outdoor space is used for both tennis and netball. The white lines are a tennis court. How does the scoring increase in tennis?



a) 10, 20, 30, 40

b) 15, 30, 40

c) 15, 30, 45, 60

d) 20, 30, 40

12. This is I block, the Maths, Science and Computing block. It is also where Year 7 had their tutor rooms this year.

In the picture, how many lights can you see on the outside of the building?



a) 4

c) 1

b) 8

d) 18

13. This is our newest block - K block. In here you will find English and our fabulous new library (learning resource centre).

In the picture, how many windows can you see on the outside of the building?



a) 5

c) 6

b) 4

d) None

14. This is the entrance to the Sports Hall and Dance studio 2. Year 7 line up outside here for their year group assembly. If there are 30 students in every class and 8 classes, assuming everyone is in school, how many students will there be in the year 7 assembly?



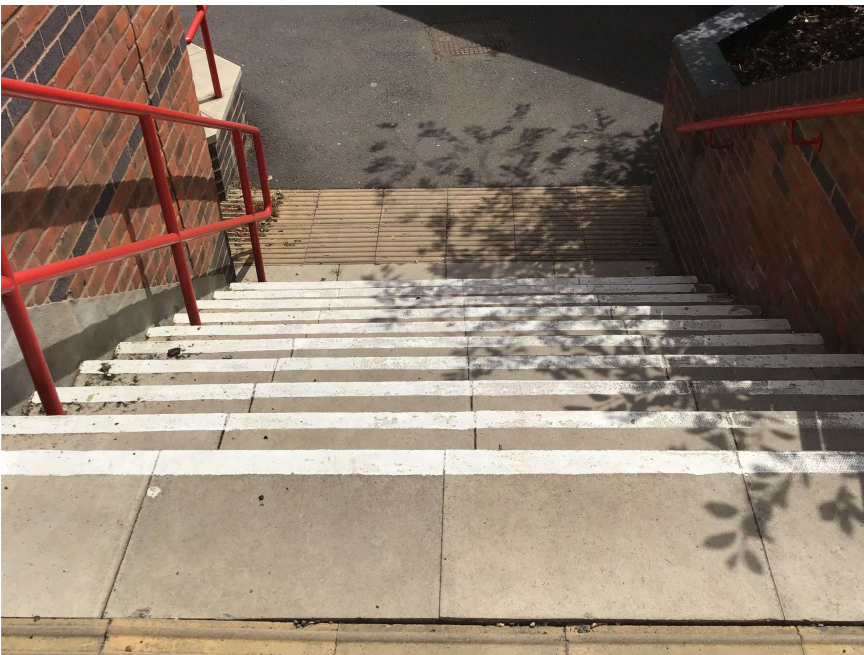
a) 240

b) 180

c) 210

d) 270

15. These steps lead down to the 6th Form Centre, Starbucks Cafe, the Drama block and ICT suites. How many steps can you see in the picture?



a) 3

b) 6

c) 8

d) 10

16. The Sandpit Theatre has some amazing productions - maybe you've been here already? Take a look at the picture carefully and you will see Sandringham School was established in 1988. In which year did Sandringham School celebrate its 20th anniversary?



a) 1998

b) 2008

c) 2018

d) 1988

17. Lots of Year 7 students enjoy the activities in F block, our Art and Music block. Which of the following names is a mathematician whose name starts with an F and is famous for sequences?



a) Fibonacci

b) Michael Faraday

c) Frances Drake

d) John Forbes Nash

18. In the picture you can see one of the Sandringham mini buses for trips, competitions and matches. The licence plate contains the number 15. Of the numbers below, which is NOT factor a of 15?



a) 15

b) 5

c) 4

d) 3

19. This is a picture of our MUGA pitch where we run lots of outdoor sports. We can see red, blue, black, white and yellow lines marking out the pitches. Which of these sequences matches the letters in the colours?



a) 1, 2, 3, 4, 5

b) 3, 4, 5, 6, 7

c) 3, 4, 5, 5, 6

d) 2, 3, 4, 4, 5

20. This is a picture of two outdoor table tennis tables which are available to use at break and lunch times. If each team consists of 2 people and there are 2 teams per table, how many people can play at one time?



a) 8

b) 16

c) 12

d) 4

21. There are many benches around school where you can eat your lunch. In the four benches you can see, if we need 4 planks of wood for each table and 2 planks of wood for each seat and there are 2 seats per bench - how many planks of wood do we need for all 4 benches?



a) 10

b) 20

c) 32

d) 36

Answer Key

1. n/a
2. c
3. d
4. b
5. a
6. c

7. d
8. b
9. c
10. d
11. b
12. a

13. a
14. a
15. d
16. b
17. a
18. c

19. c
20. a
21. c