

Sandringham School Ski Tour 2023

**Please sign in at the front of the hall and take an
Information Booklet and a Parental Consent Form**

**(You can complete this Parental Consent Form and hand it in
this evening!)**

Please follow our twitter account @Sandskitrip for all info!





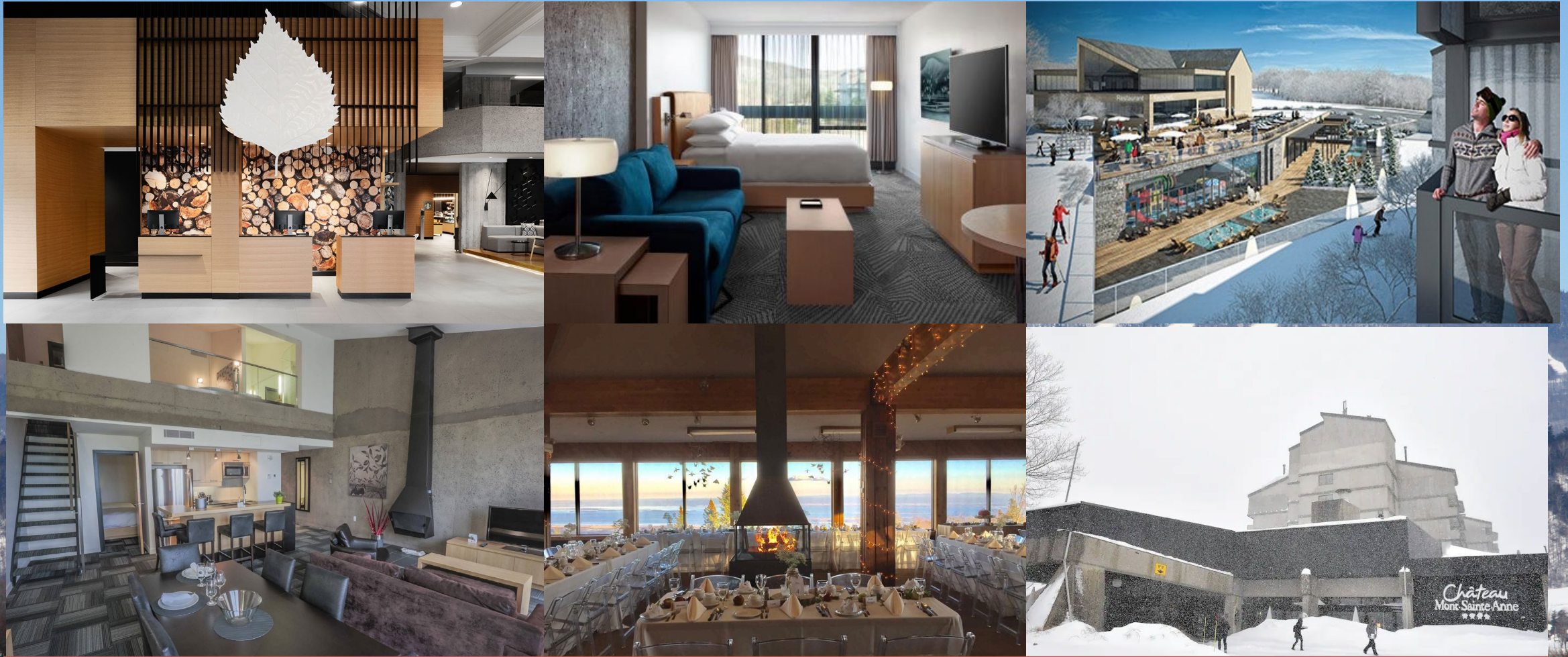
Travel Arrangements

Depart school – Saturday 11th February at approx. 9.30am

| Flight No | Dep Date | Dep Time | Dep Airport | Arr Airport | Arr Time | Airline |
|-----------|-------------|----------|-------------|-------------|--------------------------------|------------|
| AC865 | 11-Feb-2023 | 14:30 | LHR | YUL | 16:50 | Air Canada |
| AC864 | 17-Feb-2023 | 19:25 | YUL | LHR | 07:10 (land 18 th) | Air Canada |

Arrive at school – Saturday 18th February at approx. 9.30am

Chateau Mont Sainte Anne



Located on the piste – plan for rooms of four

Mont Sainte Anne - Quebec

SOUTH SIDE DETAILS

NORTH SIDE DETAILS



Mont Sainte Anne - Quebec

LIFT RANGE 175-800m

NUMBER OF LIFTS 9

SIZE OF PISTE 547 acres

NUMBER OF TRAILS 71

BEGINNER 21%

INTERMEDIATE 46%

ADVANCED 33%

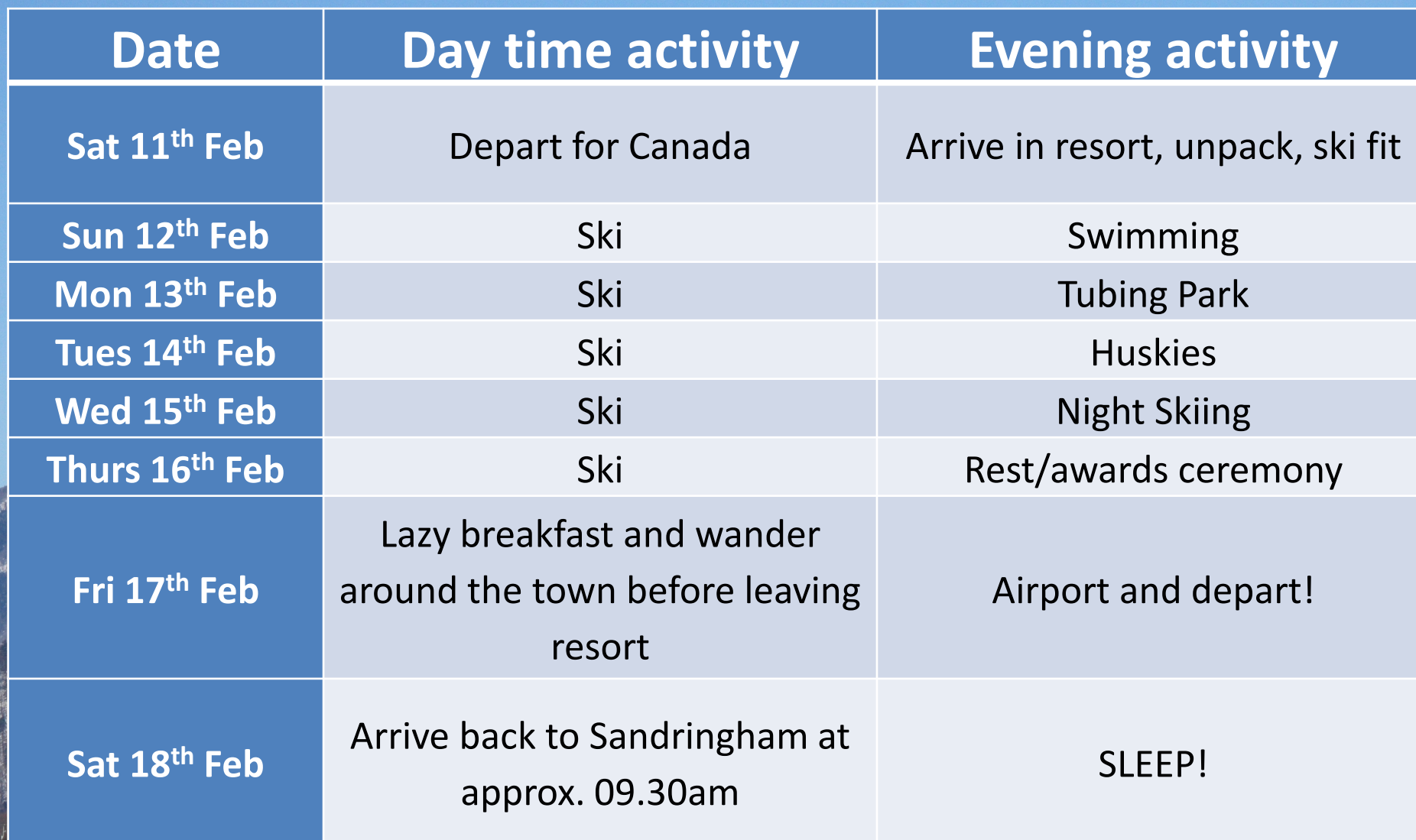
SNOWMAKING 340 acres (80%)



Evening Entertainments



Entertainments included: Swimming, night skiing, Snow Tubing, Huskies!



| Date | Day time activity | Evening activity |
|----------------------------|---|-----------------------------------|
| Sat 11 th Feb | Depart for Canada | Arrive in resort, unpack, ski fit |
| Sun 12 th Feb | Ski | Swimming |
| Mon 13 th Feb | Ski | Tubing Park |
| Tues 14 th Feb | Ski | Huskies |
| Wed 15 th Feb | Ski | Night Skiing |
| Thurs 16 th Feb | Ski | Rest/awards ceremony |
| Fri 17 th Feb | Lazy breakfast and wander around the town before leaving resort | Airport and depart! |
| Sat 18 th Feb | Arrive back to Sandringham at approx. 09.30am | SLEEP! |

Half Board

- Buffet breakfast
- Evening meal
- Students special dietary requirements such as nut allergy, vegetarian can be catered for
- Lunch is purchased on the piste!

Ski Equipment and Lessons

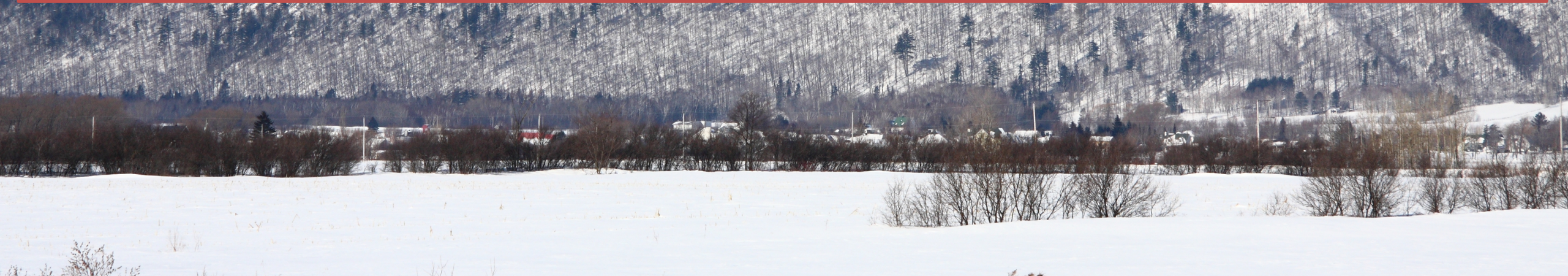
- We will be provided with good quality carving skis, boots and poles plus helmets
- All our ski equipment is provided by local suppliers holding a government-issued license.
- We use local ski schools that hold a full National Government License. We will have 5 days of 5 hours of tuition

Kit list

The kit list is in the booklet. If you have any questions, please ask.

23kg of baggage allowance

It will be very cold!



Medication and Money

Prescribed medication should be given to student services before
Wednesday 8th February 2023

Please see a member of staff if you have any concerns.

There will be an opportunity to go shopping and students will need to
purchase lunch on the piste.

An amount between 150 – 200 Canadian Dollars is recommended

Ski lessons and free ski at Hemel

- We will be providing the opportunity for students that haven't skied before with the opportunity to get on the slopes for a 2 week course with an instructor at the Hemel snow centre in early January
- Lessons will cost approx. £44 for the two sessions and it is advisable that all beginner skiers attend **both** sessions.
- Confident skiers are allowed to attend both sessions for 'unsupervised' ski, charged at approx. £21 per session

More information to follow on Google Classroom!

Hoody



Within the price of the trip, we will be organising a personalised Hoodies.

Please check Google Classroom soon!

ETA Visa

Students will need to travel with an eTA visa. If you haven't applied for one yet please do so at

<https://www.canada.ca/en/immigration-refugees-citizenship/services/visit-canada/eta/apply.html>

Documents that I need

| Document | Deadline |
|---|-----------------------|
| Passenger information Google Form | This evening! |
| eTA Visa | By Christmas |
| Medical Consent Form to Students Services | By Friday 6th January |



87 days to go!