



Sandringham School
ICELAND
April 2024

Mr Miller
Miss Pratley
Miss Goss
Ms Fricker
Mrs Mouncey
Mr Miller



DISCOVER *the* WORLD

EDUCATION

INTRODUCTION ICELAND

- Your destination – Iceland
- Your itinerary
- Travel tips
- Your tour operator – Discover the World Education



ICELAND

FACTFILE

Iceland is an island which is located where the North Atlantic and Arctic Oceans meet. Iceland was created by divergence at the Mid Atlantic Ridge. It is a land full of volcanoes, glaciers, waterfalls, jagged coastlines and other incredible geographical features, unmatched by any other place.

Currency: Icelandic króna

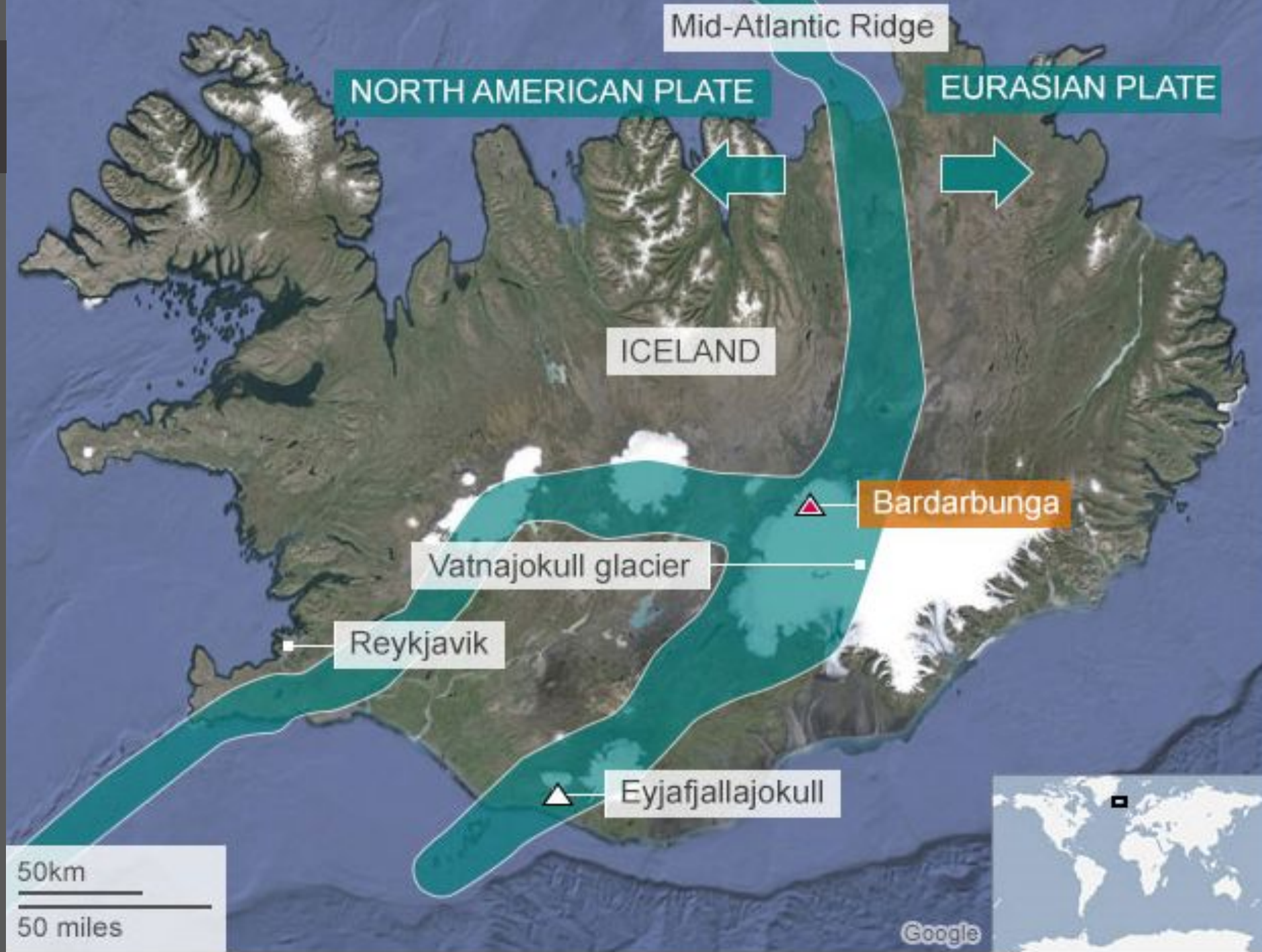
Flight duration: 2.5hr

Time zone: GMT



[illegible]

YOUR DESTINATION



ICELAND THE LAND OF FIRE AND ICE

Land created by volcanism



...and moulded by glaciation and rivers



CURRICULUM LINKS

TECTONIC
PROCESSES,
LANDFORMS AND
HAZARDS

WEATHER
PROCESSES AND
HAZARDS

WATER, RIVER AND
COASTAL
PROCESSES,
LANDFORMS AND
MANAGEMENT

POPULATION,
ECONOMIC AND
URBAN CHANGE

GLACIAL
PROCESSES,
LANDFORMS AND
MANAGEMENT

CLIMATE
CHANGE

GEOLOGICAL
PROCESSES AND
LANDFORMS

FOOD, WATER
AND ENERGY
RESOURCES

ECOSYSTEMS

FIELDWORK

SCIENCE CURRICULUM LINKS

WATER
RESOURCES

EVOLUTION,
ADAPTATION
& NATURAL
SELECTION

ENERGY

CONSERVATION
& MAINTAINING
BIODIVERSITY

ORGANISMS &
ENVIRONMENT

ECOSYSTEMS

CLIMATE
CHANGE

ROCK CYCLE





YOUR ITINERARY – DAY 1



Drive across the Reykjanes Peninsula



DISCOVER *the* WORLD

EDUCATION

Meet your guide, who will accompany you for the next few days...



Cross the 'Bridge between Continents'



Walk through the sulphurous fumes at Gunnuhver hot springs



DISCOVER *the* WORLD

EDUCATION

YOUR ACCOMMODATION

Dinner and overnight at
Guesthouse Hjardarbol





YOUR ITINERARY – DAY 2



Drive through the valley flooded in 2010 by the Eyjafjallajokull glacier burst



DISCOVER *the* WORLD
EDUCATION

Take a guided glacier walk on Solheimajokull glacier tongue



DISCOVER *the* WORLD
EDUCATION

Visit the tiny coastal town of Vik,
for your lunch stop.



DISCOVER *the* WORLD
EDUCATION

Take a walk on the black sand beach at Reynishverfi



DISCOVER *the* WORLD

EDUCATION

Climb to the top of beautiful Skógafoss



DISCOVER *the* WORLD

EDUCATION

Get soaked by Seljalandsfoss waterfall



DISCOVER *the* WORLD

EDUCATION

YOUR ACCOMMODATION

Dinner and overnight at
Guesthouse Hjardarbol





YOUR ITINERARY – DAY 3



Soak in the naturally heated waters of the Secret Lagoon



DISCOVER *the* WORLD
EDUCATION

Watch in awe as Strokkur, erupts in front of you



DISCOVER *the* WORLD

EDUCATION

Incredible Geysers



DISCOVER *the* WORLD

EDUCATION

Marvel at Iceland's most photographed waterfall, Gullfoss “Golden Falls”



DISCOVER *the* WORLD

EDUCATION

Visit EfstiDalur farm where there is a farm, café and Ice cream available



Visit Þingvellir National Park, on the Mid-Atlantic Ridge



DISCOVER *the* WORLD

EDUCATION

YOUR ACCOMMODATION

Dinner and overnight at
Guesthouse Hjardarbol



YOUR ITINERARY – DAY 4



Behind the town of Hveragerði is Reykjadalur, a geothermally active valley. Through this valley flows the Varmá, meaning Warm River. Take a short walk to some hot springs and mud pools.



DISCOVER *the* WORLD

EDUCATION

Take a tour of Hellisheiði Geothermal Power Station



DISCOVER *the* WORLD

EDUCATION

Travel Tips





Currency & Spending Money

Reykjavik in April



Sunrise

06:33



Sunset

20:29



Day length

13.55hrs



Difference

-1hr

Average temperature

Min

0°C

Max

5°C

What to pack?

- Swimwear & towel
- Waterproof jacket & trousers
- Walking boots
- Warm & gloves
- Day bag or small rucksack
- Walking trousers, base layers or jogging bottoms
- Warm jumpers and socks
- Layers!
- Camera
- EU adaptor
- Sunglasses
- Lip balm
- Passport
- Refillable water bottle



Passport Reminders/Advice

UK Passports and Visa Advice

To enter Iceland (and all Schengen countries) your passport must:

- have a 'date of issue' less than 10 years before the date you arrive.
Passports issued after 1 October 2018 are now valid for only 10 years, but for passports issued before 1 October 2018, extra months may have been added if you renewed a passport early
- have an 'expiry date' at least 3 months after the day you plan to leave

Contact [Iceland's embassy](#) in the UK if your passport does not meet both these requirements.

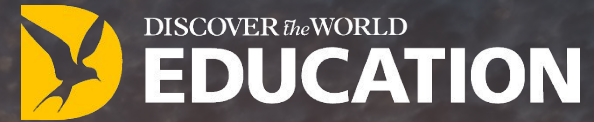
If a non-EU passport, use this to find visa requirements:

<https://www.iatatravelcentre.com/passport-visa-health-travel-document-requirements.htm>

Enter our **Photo & Video Competition** and
you could win **£100** in Amazon vouchers!



Discover the World are the world's leading tour operator to Iceland



Our team is made up of former teachers and school travel experts who will design the perfect Geography, Science or Adventure trip to engage and inspire your students.

35 years' experience of organising tours to Iceland

- Exceptional local knowledge and supplier relationships
- Great value for money and quality experience
- Quality assured members of The School Travel Forum
- COVID assurance Protection
- Financial security - fully bonded with ABTA and ATOL
- Since 2010, 98% of customers have rated us as good or excellent



"I would like to thank you for organising such amazing trips for young people like me! Those few days I spent in Iceland and its wild nature created some of my most memorable and unforgettable memories."

Eleonora, International School of the Hague

ANY QUESTIONS?